

## **Software bundle: IPPSCommander™ Lite**

IPPSCommander™ Lite is designed for running in Windows 9X, 2000, XP, & NT platform. It centralizes and responds to the data from IPPS™.

### **Features are:**

- AutoSave
  - Save opened files and close applications automatically
  - Compatible with Microsoft Office, Lotus Suite, WP Suite
  
- Event and Data Logging
  - Record the condition of your power line & the event triggered by IPPS™
  - Log viewer is provided for better monitoring
  
- Email and Voice Notification
  - Send out email on the event from IPPS™ through your inbox email system in MS Windows
  - Users can pre-record a vocal message for notification that needs to perform in case of power failure
  
- Scheduled MS Windows shutdown
  - MS Windows OS and hardware system will be shutdown automatically by either the time scheduling or battery power watch
  
- A graphical display indicating the IPPS™ status
  - Voltage reading
  - Battery level

All product information is subject to change without further notice.

IPPSCommander™ Daemon (IppsD) is designed for running in LINUX platform.

Features are:

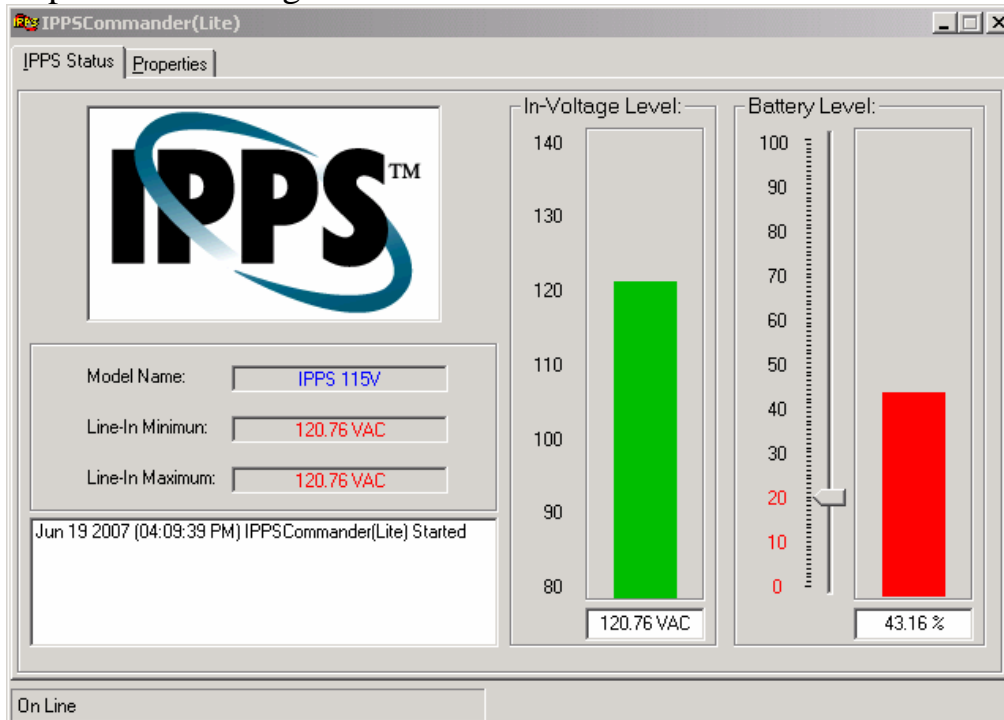
- Event and Data Logging
  - Record the condition of your power line & the event triggered by IppsD™
- LINUX OS shutdown
  - LINUX Operation System will be shutdown automatically by either the time scheduling or battery power watch
- System turn off
  - System will be turn off automatically after OS shutdown in power failure event.

All product information is subject to change without further notice.

All product information is subject to change without further notice.

# IPPSCommander™ Lite Graphics User Interface

## Expanded Menu Pg. 1: IPPS Status



## Expanded Menu Pg. 2: Properties

IPPS Commander(Lite)

IPPS Status | Properties

Port:

Log Files Location:

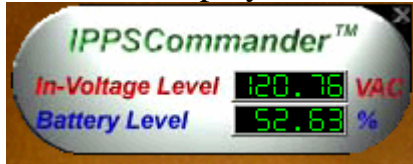
Shutdown Delay (0 - 1200 sec)  Seconds

Display IPPS Logo When Power Off-Line

On Line

Properties Menu allows user to set control for:  
E-mail\Log Files\Program Options\Shut down\Sound

## Standard Display



Movable around WINDOWS Desktop

## Commander Icon



IPPS\_Commander Icon is placed at WINDOWS Desktop Tools Bar (Right lower corner)  
Click the icon will change Standard Display into Expanded Menu